

genopal
Application Guide

In this Guide

This guide explains how to use GenoPal for the following applications:

1. Find the right color _____ 2
2. Make color schemes _____ 3
3. Color schemes from images _____ 4
4. Matching colors _____ 5
5. Build your swatch _____ 6

Find the Right Color

Sometimes you have no clue where to start on a color quest. You could just browse a while and explore all colors.



Three color palettes created by picking generated colors as new start colors

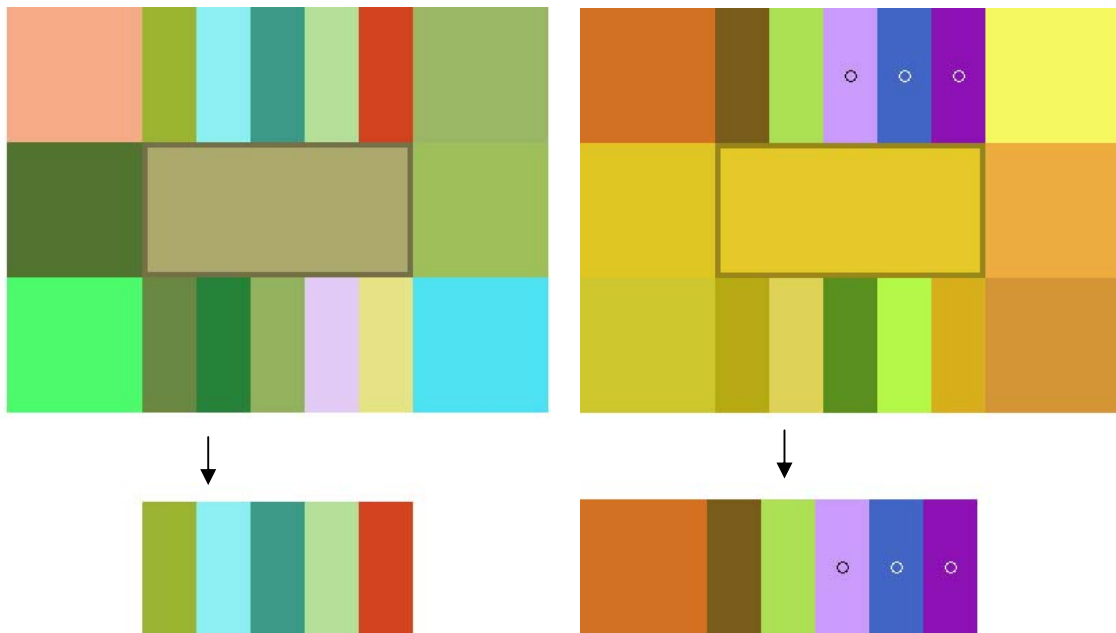
To explore colors:

1. open GenoPal
2. adjust C,L sliders to your liking
3. double click on any generated color, repeat this a couple of times

Tip: Select the huge screen filling layout and enjoy

Make Color Schemes

Recognizing nice color schemes is all what you need to create them with GenoPal. Starting from an initial guess, GenoPal makes color suggestions, you just pick what you like.

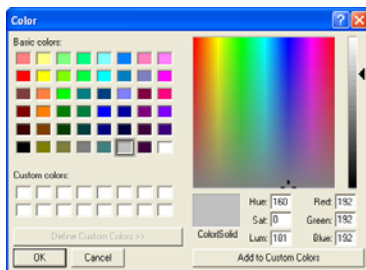


Left example: This color scheme was created using a single start color, nice colors were moved close together.

Right example: This color scheme locked colors and generated new ones using a different start color.

To create a color scheme:

1. pick a start color using the color picker or using the a conventional HSL color picker which you access by clicking on the current start color



color picker HSL

2. adjust the sliders and generate color option using the little arrow
3. lock color or combinations you like and regenerate the remaining colors
4. move colors you like close together
5. keep color combinations you like
6. import the colors into your application by copying the values or making screenshots (press 'Print Screen' on your keyboard and paste into your application)

Tip: Run several instances of GenoPal simultaneously

Color Schemes from Images

Drawing inspiration from an image to create a color scheme is a classic way to create color schemes. But often the colors you pick from an image are not what you expected, the actual pixel color is not what you had in mind. GenoPal can help to change the colors quickly to match your idea.



The initially picked skin color was too dark and brown

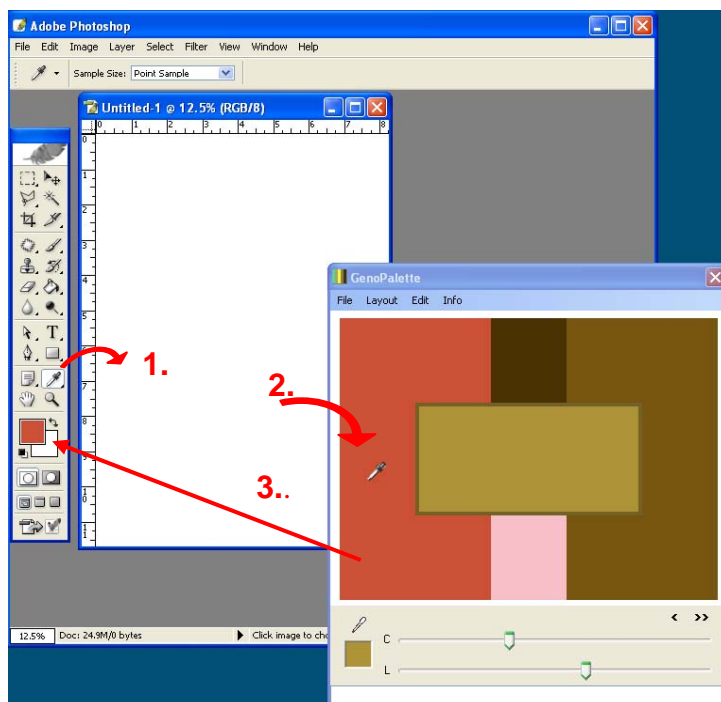
To extract a color scheme from an image

1. open the image in any application or viewer
2. open GenoPal
3. pick colors using GenoPal picker or your paint program
4. adjust colors using GenoPal

Tip: The Adobe Photoshop color picker can pick directly into GenoPal:

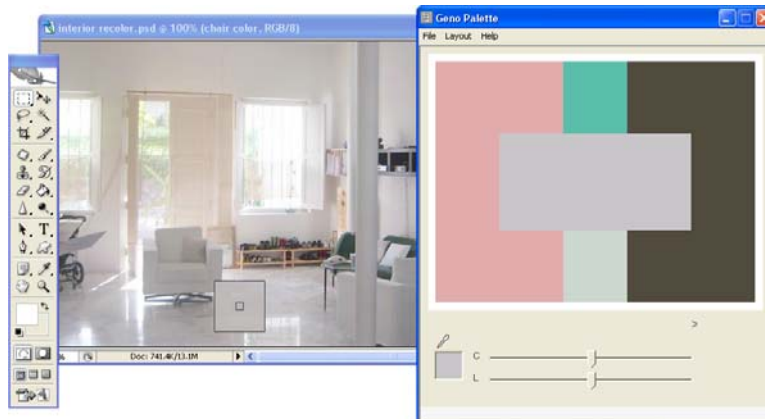
1. select the picker
2. click in the Photoshop document, hold it pressed and move it over the color in GenoPal
3. release the picker.

The color from GenoPal is now in your color selection box.



Matching Colors

Whether it is in interior decoration or a company's web presence, often you have to find colors which match an existing color, like the floor in your house or a company color.



The floor color of an interior is used to find matching colors



Four color schemes are further explored. (The re-coloring of the furniture has been done in Adobe Photoshop)

To find matching colors:

1. select the color that you want other colors to match, as a start color
2. explore options, generate and change setting (adjust C,L sliders)
3. lock colors you like and re-generate the remaining colors
4. keep color schemes you like and use them in your designs
5. transfer colors into your application by value or screenshot

Tip: Select the 4-patch layout

Build Your Swatch

The palettes that you have created for one project may be saved in GenoPal format (.pal) for use in further projects. Save as many swatches as you wish to accumulate a collection of your favorite colors.



A 16 color selection to represent autumn - the selection is specific, different to the images and highly subjective, next year my autumn will be different...

To build your swatch:

1. use GenoPal to explore color or make schemes as suggested in previous sections
2. lock your preferred generated colors
3. you may choose to reorder the position of the color cells by dragging and dropping them
4. save your palette
5. to use in future projects, open the saved .pal file

Note: Only the start color, locked colors and the C,L settings are saved.

Have Fun!

The Genometri Team